



Eckington Town Centre Masterplan Public Consultation

Levelling Up Bid Appendix 5

Prepared for North East Derbyshire District Council

July 2022

Public Consultation Summary Overview

A full public consultation was undertaken on the town centre masterplan option appraisal. This work helped to inform the preferred option, leading to the preparation of the masterplan for the town centre.

The following presents details of the physical event and summarises its outcomes. In addition to the physical event a 4 week online consultation was undertaken. This summary records the feedback from both formats.

Location : Eckington Civic Hall, Market Street, Eckington

Date : 10 June 2022

Attendees : 400 approximately

Response received : 97

The boards at the public consultation (both physical and online) were presented with a set of questions and feedback was collected through online and physical questionnaires.

1. Do you agree with change taking place in Eckington town centre?

2. What do you like and dislike about each option?

3. Do you have a preference for any town centre option? Why?

4. Do you agree with the vision, if not what should be changed?

5. Do you have a preference for any Lansbury Park option? Why?

6. Do you think Eckington is missing any service in the town centre that the options don't provide?

7. Would you be willing to walk and able to walk, cycle or use the bus to access the town centre most of the time?

8. Which road and town / village do you live in?

The following pages show the public consultation boards followed by the summary of responses.

11

VISION FOR THE FUTURE OF ECKINGTON TOWN CENTRE

PUBLIC CONSULTATION

LANSBURY PARK

The site is located about 10 minutes walk from Eckington town centre. It is the ownership of NEDDC and currently provides informal green space rather than formal designated playing fields, with a Multi-use Games Area (MUGA), skate park and Local Equipped Area of Play (LEAP) on site.

There is a potential to introduce new play facilities for community with small amount of housing on some of the land to the north of the site whilst relocating the MUGA and skate park and upgrading or replacing the poor quality LEAP to rear of Lansbury Road. There is a potential to work with Miners Welfare Club to create an enhanced community hub for Eckington.

The site has following characteristics:

- The site accessed off High Street via minor route
- Area bounded by existing housing to the north/ east and west
- Allotments to the south
- Restricted vehicular access off Pipeyard Lane
- Good pedestrian connections
- Play areas are scattered
- Potential for Miners Welfare Social Club improvements

The images below represent an illustrative example for potential transformation of the site and potential new play facilities at Lansbury Park.



Site features and constraints diagram



Illustrative example of potential new play area at Lansbury Park



The potential new Lansbury Park on NEDDC land could provide:

- A new kiosk café with outdoor seating overlooking the park
- A 44 space car park
- Separate covered seating areas
- New Skate Park
- Small 3G pitch with floodlights potential
- Perimeter walking and cycling links
- Nature Area with potential for education use
- Dog Agility area

12

VISION FOR THE FUTURE OF ECKINGTON TOWN CENTRE

PUBLIC CONSULTATION

WE WELCOME YOUR FEEDBACK

WE WELCOME YOUR THOUGHTS, IDEAS AND CONCERNS OVER THE PROPOSALS PRESENTED HERE.

IN ADDITION TO YOUR GENERAL COMMENTS WE WOULD LIKE TO HEAR SPECIFICALLY ON THE FOLLOWING QUESTIONS:

1
DO YOU AGREE WITH CHANGE TAKING PLACE IN ECKINGTON TOWN CENTRE?

2
WHAT DO YOU LIKE AND DISLIKE ABOUT EACH OPTION?

3
DO YOU HAVE A PREFERENCE FOR ANY TOWN CENTRE OPTION? WHY?

4
DO YOU AGREE WITH THE VISION, IF NOT WHAT SHOULD BE CHANGED?

5
DO YOU HAVE A PREFERENCE FOR ANY LANSBURY PARK OPTION? WHY?

6
DO YOU THINK ECKINGTON IS MISSING ANY SERVICE IN THE TOWN CENTRE THAT THE OPTIONS DON'T PROVIDE?

7
WOULD YOU BE WILLING AND ABLE TO WALK, CYCLE OR USE THE BUS TO ACCESS THE TOWN CENTRE MOST OF THE TIME?

8
WHICH ROAD AND TOWN / VILLAGE DO YOU LIVE IN?

WHAT HAPPENS NEXT?

LEVELING UP BID TO BE SUBMITTED - 6TH JULY, 2022
RESULTS TO BE ANNOUNCED - AUTUMN, 2022
IF SUCCESSFUL, FURTHER DETAILED CONSULTATION WILL BE UNDERTAKEN

11 VISION FOR THE FUTURE OF ECKINGTON TOWN CENTRE PUBLIC CONSULTATION

LANSBURY PARK

The site is located about 10 minutes walk from Eckington town centre. It is the ownership of NEDDC and currently provides informal green space rather than formal designated playing fields, with a Multi-use Games Area (MUGA), skate park and Local Equipped Area of Play (LEAP) on site.

There is a potential to introduce new play facilities for community with small amount of housing on some of the land to the north of the site whilst relocating the MUGA and skate park and upgrading or replacing the poor quality LEAP to rear of Lansbury Road. There is a potential to work with Miners Welfare Club to create an enhanced community hub for Eckington.

The site has following characteristics:

- The site accessed off High Street via minor route
- Area bounded by existing housing to the north/ east and west
- Allotments to the south
- Restricted vehicular access off Pipeyard Lane
- Good pedestrian connections
- Play areas are scattered
- Potential for Miners Welfare Social Club improvements

The images below represent an illustrative example for potential transformation of the site and potential new play facilities at Lansbury Park.



Site features and constraints diagram



Illustrative example of potential new play area at Lansbury Park



The potential new Lansbury Park on NEDDC land could provide:

- A new kiosk café with outdoor seating overlooking the park
- A 44 space car park
- Separate covered seating areas
- New Skate Park
- Small 3G pitch with floodlights potential
- Perimeter walking and cycling links
- Nature Area with potential for education use
- Dog Agility area

12

VISION FOR THE FUTURE OF ECKINGTON TOWN CENTRE

PUBLIC CONSULTATION

WE WELCOME YOUR FEEDBACK

WE WELCOME YOUR THOUGHTS, IDEAS AND CONCERNS OVER THE PROPOSALS PRESENTED HERE.

IN ADDITION TO YOUR GENERAL COMMENTS WE WOULD LIKE TO HEAR SPECIFICALLY ON THE FOLLOWING QUESTIONS:

1
DO YOU AGREE WITH CHANGE TAKING PLACE IN ECKINGTON TOWN CENTRE?

2
WHAT DO YOU LIKE AND DISLIKE ABOUT EACH OPTION?

3
DO YOU HAVE A PREFERENCE FOR ANY TOWN CENTRE OPTION? WHY?

4
DO YOU AGREE WITH THE VISION, IF NOT WHAT SHOULD BE CHANGED?

5
DO YOU HAVE A PREFERENCE FOR ANY LANSBURY PARK OPTION? WHY?

6
DO YOU THINK ECKINGTON IS MISSING ANY SERVICE IN THE TOWN CENTRE THAT THE OPTIONS DON'T PROVIDE?

7
WOULD YOU BE WILLING AND ABLE TO WALK, CYCLE OR USE THE BUS TO ACCESS THE TOWN CENTRE MOST OF THE TIME?

8
WHICH ROAD AND TOWN / VILLAGE DO YOU LIVE IN?

WHAT HAPPENS NEXT?

LEVELING UP BID TO BE SUBMITTED - 6TH JULY, 2022
RESULTS TO BE ANNOUNCED - AUTUMN, 2022
IF SUCCESSFUL, FURTHER DETAILED CONSULTATION WILL BE UNDERTAKEN

Summary of Responses

The following responses have been summaries from physical and online feedback forms.

1. Do you agree with change taking place in Eckington town centre?

YES	NO	General comments
88	9	Avoid relocating library Not on Pinfold Street Why relocating bus station? Don't want houses in front of bus station More parking needed Not enough access to Market street Needs complete facelift Anything that revitalises More as a business opportunity (-) Better community vibe Eck- Cohesive trendy and vibrant town

2. What do you like and dislike about each option?

Option 1	Option 2	Option 3
Does not offer enough amenities Dislike big car park near bus station Not radical enough Dislike increasing traffic with car park	Not favouring relocation of library Modern approach Poor location of bus station Attract businesses Do not like road crossing through Covers more assets Easily accessible Dislike straight row of shops Why reduce size of library and move away from TC More central space Visually attractive Central space is needed Additional businesses Dislike huge car park Not enough office space Concerned about added traffic Car park barrier to TC	More green/ open space Places to socialise Provides shops No bus station across main road Improved pedestrians More appealing More than required green space Dislike reducing library size Provides car parking Limited retail shops Dislike loss/relocation of bungalows

3. Do you have a preference for any town centre option? Why?

Option 1	Option 2	Option 3
7	34	27
Lower costs Feasible Only enhances current shops Like multicoloured shops	Parking arrangements Upto date Achievable Green space at heart Calms traffic More offering	Open spaces Place for children Calms traffic Green funnel Attract people from high street Visibility of Market Street

4. Do you agree with the vision, if not what should be changed?



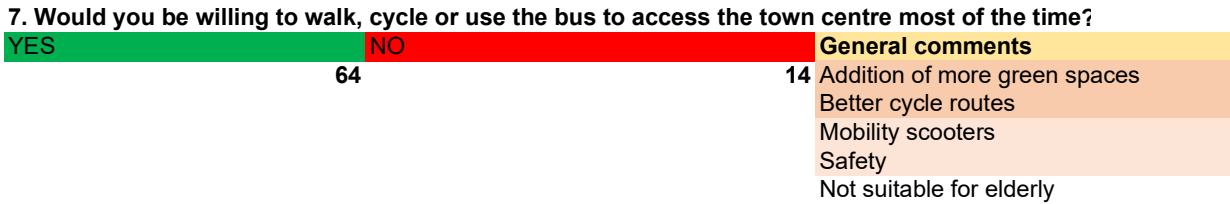
5. Do you have a preference for any Lansbury Park option? Why?

- Needs something for children
- Prevent vandalism
- Make area safe
- More equipment
- Basic play amenities missing
- Need more fencing
- Needs recreation facilities
- Parking for kids
- Love park and café
- Improve facilities
- Dog walks
- Tea room within park
- Do not build more houses
- Residents concerned about noise and light pollution because of football pitch

6. Do you think Eckington is missing any service in the town centre that the options don't provide?

- Tram and bus link to other towns
- Smarter retail shops
- Good quality café
- Improvements to encourage evening/tea time activities
- Bars
- Seating areas
- Cycle facilities
- Quality shops
- Public houses
- Transport options
- Craft Shops
- Stalls/ Market days
- Things for teenagers
- Adult education classes
- Bus service day/night
- Hospitality businesses
- More residential
- Banks
- Electric cars charging points
- Public toilets
- Farmers markets
- Police presence
- Provision of clinics at town centre
- Different adult and socialising spaces
- Clear crossings

7. Would you be willing to walk and able to walk, cycle or use the bus to access the town centre most of the time?



General comments

PUBLIC CONSULTATION- FEEDBACK FORMS		
General Comments	Movement	Community Facilities
More office spaces	Traffic Calming	No change to Library size
Long overdue	More parking needed	Addition of signage in town centre
Lacking shops	Avoid relocation of bus station	Prevent vandalism
To attract different age groups	Avoid increasing traffic in TC	Enhance community centre
Poor shop frontages	Safety on Pinfold St	Amenities for all age groups
Social areas	Avoid car park at Pinfold St	Public toilets
Parking bays	Bus station attracts vandalism	Provision of clinics in town centre
Disliking removal of 2 bungalows	Improved cycle network	Banks
Market/Event place/shops	Improve pedestrian access	Social areas
Co-op can become community centre	Better connectivity to neighbouring villages	Co-op can become community centre
Avoid building on greens	Zebra crossings	Utilise Renishaw Hall
Dislike adding housing and removing current facilities	Tram and bus link to other towns	Attract different age groups
Limited retail facilities in Eckington		
Poor sight lines on Gosber Street		
Locals to be kept informed of changes	Dislike car park at TC entrance	Historic buildings to be improved
Excellent presentation	Concerned increasing traffic in TC	Public houses
No amenities for children	Tram stop connections	Repurpose library and add social activities
Town not offering much	Poor location of bus station	Need learning hub at old youth centre
Removal of Northgate house	More public transport options	Promote tourism facilities
Café culture	Narrow pavements	
Micropubs and nice cafes	Attract people from high street	
Library is successful in current form (do not change)	Parking bays	
Needs more signs	Visibility of Market Street	
Removing nail bars/hair dressers	Dog walks	
No more housing on green sites	Proper path to Eckington Cricket Club	
Avoid increasing traffic	Park and ride culture	
Bus station should remain as it is	Parking for kids	
Historic buildings to be retained and improved	Bike network needed	
Green infrastructure needed		
Too much parking around bus station	Improve accessibility to town centre	
Need proper bus station	Traffic lights in TC	
New youth club	Disabled friendly access in parking/buildings	
Issue of drugs	Car park at Pinfold St a barrier	
Narrow pavements	Anti social behaviour with car park	
Dislike car park at TC entrance		
Playground/tennis court for children and adults		
Central area can be pedestrianised		
Concerned increasing traffic in TC		
No consideration for residents on Pinfold St		
Pinfold St residents dislike bus station near them		
Bike network needed		
Too many take aways		
Need artisan style walls		
Entertainment facilities (Theatres?)		
Need to increase economy		
Tram stop connections		
Zebra crossings		
Better pathways for disabled		
Small parks across town		
More affordable houses		
Proper path to Eckington Cricket Club		
Use Renishaw halls		
Bus station attracts vandalism		
Links to neighbouring villages		
More shared spaces		
Dislike bus station turned into car park		
Additions of sculpture pieces		
Less focus on adding cars and more on community areas		
Demolish flats in Market Street		

Open Space	Other facilities
Seating spaces needed	Removal of Northgate house
No amenities for children	Addition of cafes
Need more fencing	Removal of nail bars/vape shops
Green infrastructure across TC	Need recreation facilities
Central area can be pedestrianised	Market/Event place/shops
Facilities for evening activities for all ages	Micropubs
Vandalism noticed	Need more retail
Need more open spaces	Hospitality facilities
Safety	Farmer markets
Playground/tennis court for children/ adults	Craft shoppes
Informal gatherings	More for family events
Park security	Poor shop frontages
Gateway overlooking Lansbury Park	No consideration for residents on Pinfold St
Access from minor route due to traffic	Improve shop frontages
	Create temporary spaces
	More office spaces
	Don't want houses in front of bus station
	More businesses
	Affordable houses
	Entertainment facilities



Eckington Town Centre Masterplan Stakeholder Engagement

Levelling Up Bid Appendix 7

Prepared for North East Derbyshire District Council

July 2022

Stakeholder and Public Engagement

Public Consultation

The public consultation event was held in June, 2022 at Eckington Civic Centre, Eckington Leisure Centre and online. It was promoted social media and through the delivery of over 4,000 leaflets. It was attended by approximately 400 people and gave the opportunity for local residents to find out more about transformational changes the team has been working on last six months, learn about different options and share their views on which option is their preference.

All three options looked at establishing a heart in Eckington town centre accommodating car parking, making improvements to public realm and existing shop fronts, and create better pedestrian connections between different areas. The description and benefits of each option are presented in chapter 7 - Masterplan Options Appraisal.

The public also had an opportunity to fill in questionnaires during the event and alternatively online to express their views on the proposals. A total 97 questionnaires were filled both online and during the consultation event.

Most of the residents were in favour of changes taking place and proposed vision for Eckington town centre with option 2 being the preferred option. The public recognises the town requires investment in order to allow existing businesses to thrive and to attract new ones. The summary of responses are:

- It's important to keep the bus station and improve the public transport links

- There is a lack of open green space within the town centre
- Strong resistance relocating the library
- Improvements to shop frontages and public realm on Market Street
- To redevelop Northgate House will benefit the overall look of the town centre
- More car parking is required
- Town centre lacks good quality cafe or pub, seating areas, smarter retail shops and place for market stalls
- Concerns about traffic on Pinfold Street

The public were very supportive of proposals on Lansbury Park and felt a new community park with play and recreational facilities are really needed. It would improve the safety of the area and create play opportunities for children.

Although the public agreed with the benefits of the larger open public space option 3 would provide, there was a general agreement that option 2 would provide a better solution to necessary parking, an entrance and visibility from Pinfold Street. Option 2 is also dealing with providing new bus lay-by's and improving the public realm area which will create a gateway to Eckington town centre from Pinfold Street.

The full responses from online and physical questionnaires are submitted in the separate document as part of the Levelling Up bid, appendix 5 - Consultation Boards and Responses.

1 VISION FOR THE FUTURE OF ECKINGTON TOWN CENTRE PUBLIC CONSULTATION

WELCOME

Thank you for attending Consultation event. We to hear your views and answer your questions. Leave us your feedback questionnaire, or better website www.ne-derby

PREVIOUS STUDIES

The previous studies undertaken by North East Derbyshire District

INTRODUCTION TO

North East Derbyshire District Council (NEDC) and Eckington Parish Council (EPC) and Derby City Council are seeking to create transformational change with plans for Eckington town centre. We consultants Mace and GL Hearn, the town to prepare a series of options for key site viability appraisals in order to prepare a government to help level up the district.

The Government has recently launched Levelling Up Fund. This Fund is designed that improves everyday life across the UK to communities, revitalising our towns and opportunities and services.

The Council has been working with the MP Lee Rowley to develop a masterplan of a Levelling Up bid, and the results are interventions to improve Eckington town Park at Lansbury Road recreational ground. A range of possible approaches illustrate the time to look through the options, and what you like and dislike, as the preferred option that will make up our Levelling Up applications is 8th July 2022 be made by government in the Autumn.



4 VISION FOR THE FUTURE OF ECKINGTON TOWN CENTRE PUBLIC CONSULTATION

MASTERPLAN OPTIONS APPRAISAL DEVELOPMENT OBJECTIVES FOR THE MASTERPLAN OPTIONS

Following an options appraisal a draft vision various levels of interventions within Eckington three most the opportunities and identified co

All three options look at establishing a heart in accommodating car parking, making improved and existing shop fronts and create better peck between different areas.

The proposed options on the next 3 slides are Options are supported by viability appraisal an which will form part of the business case which developed. Once completed, this will then form Council's future regeneration funding application: Up and Shared Prosperity.



Concept diagram for changing the town centre



6 VISION FOR THE FUTURE OF ECKINGTON TOWN CENTRE PUBLIC CONSULTATION

MASTERPLAN OPTION 2 - PINFOLD STREET CAR PARK AND EMPLOYMENT

This option creates step change for town centre regeneration. Alongside the enhancement of the current town centre with an upgraded public realm, streetscape and street furniture, this option focuses on the importance of placemaking, employment and retail facilities.

The new public car park will provide a visibility to a town centre and offer a park and ride opportunity for people travelling to Sheffield and

The intent is to maximise the development square linking new built with high quality parking requirements, introducing the bus stop and inclusion of Pinfold Street to the town

Changing the bus stops with lay-bys on Pinfold Street/ new internal bus loop street

Surface parking (75 spaces) at Pinfold Street set up in a strong landscape framework

Removal of Northgate House to create new mix mixed-use block with employment uses overlooking the Pinfold Street car park

Improvements to shop frontages at Market Street and Southgate

New public realm in the centre of Eckington, providing pedestrian friendly and traffic-calmed shared streets

Reproviding retail with potential residential on upper level overlooking a new Market Square

Existing library building repurposed for additional employment/ office space

Library relocated to the extension of the Leisure Centre as a single storey building



8 VISION FOR THE FUTURE OF ECKINGTON TOWN CENTRE PUBLIC CONSULTATION

ARTIST'S IMPRESSIONS OF OPTIONS 1 AND 2



Key Plan

To support Market Street as a key civic asset, many of the building frontages and pavements could be improved with newly painted facades and new signage. It will encourage businesses to prosper. Improvements to public realm with new surface materials, landscaping elements and added street furniture and new surface car parking will encourage community to use the public realm spend more time in the town centre

Market square located at the heart of the town centre will bring life and activities to the area. Ground floor spaces with potential spaces for cafes and shops and some apartments upper floor will overlook the square. Existing trees on Market Street will be complemented with proposed trees and additional seating areas located within the square.



11 VISION FOR THE FUTURE OF ECKINGTON TOWN CENTRE PUBLIC CONSULTATION

LANSBURY PARK

The site is located about 10 minutes walk from Eckington town centre. It is the ownership of NEDDC and currently provides informal green space in either the formal designated playing fields, with a 144-space Games Area (MUGA), skate park and Local Equipped Area of Play (LEAP) on site.

There is a potential to introduce new play facilities for community with small amount of housing on some of the land to the north of the site whilst relocating the MUGA and skate park and upgrading or replacing the poor quality LEAP to near of Lansbury Road. There is a potential to work with Miners Welfare Club to create an enhanced community hub for Eckington.

The site has following characteristics:

- The site accessed off High Street via minor route
- Area bounded by existing housing to the north, east and west
- Allotments to the south
- Restricted vehicular access off Pipeyard Lane
- Good pedestrian connections
- Play areas are scattered
- Potential for Miners Welfare Social Club improvements

The images below represent an illustrative example for potential transformation of the site and potential new play facilities at Lansbury Park.



Illustrative example of potential new play area at Lansbury Park



Site features and constraints diagram



- The potential new Lansbury Park on NEDDC land could provide:
- A new skate park with outdoor seating overlooking the park
 - A 44 space car park
 - Separate covered seating areas
 - New Skate Park
 - Small 2.5 pitch with floodlights pitch
 - Perimeter walking and cycling links
 - Nature Area with potential for education use
 - Dog Agility area



HOUSE OF COMMONS

LONDON SW1A 0AA

Community Ownership Fund
DLUHC
Fry Building
2 Marsham Street
London
SW1P 4DF

9th April 2024

I am writing in support of the application from Eckington Parish Council to the Community Ownership Fund for £200,000 towards the revitalisation of the old Stead Street Youth Centre site.

Eckington is a wonderful small town in North Derbyshire, with a real sense of community and a desire to make progress. The town has a rich industrial past and was one of the last places where coal mining took place in the UK, with the last drift mine only closing five years ago. Like so many small towns across the country, it has struggled, at times, with the broader changes that are happening to our high streets and to community locations – something which the Parish Council is determined to try to help with. Over the last five years, the Council have really tried to bring forward new plans and look for opportunities to enable the community to move forward. They now have developed an extensive and exciting list of options, including this one, to help Eckington get ahead again.

The challenge is, inevitably, one of funding and, to date, Eckington is still an area which could benefit from further support – something which this application to the Community Ownership Fund could significantly help with. The regeneration of the site on Stead Street – formerly a much-loved youth centre but now no longer used – is a brilliant opportunity for the community to come together and see real change. Without some form of injection of funding into this site, the existing buildings are expected to fall into further disrepair and, likely, will begin to attract anti-social behaviour. The proposition being put forward by the Parish Council is, in my view, an excellent opportunity to do something that is at the very heart of the Community Ownership's Funds mission – to save an important asset and return it to the heart of the community again.

The community, represented by the Parish Council, are absolutely determined to see this project come to fruition, and have been building up their reserves since



2019, by prudent financial management (they have one of the lowest parish precepts in the area) and maximising the income opportunities from their civic halls. To date they have saved over £400,000 towards the project.

As the MP for Eckington, I very much support this bid and I hope that it is successful. I would be very grateful if you would consider the application and, I hope, look favourably upon it to allow the extremely important work of the Parish Council to continue – and to revitalise a part of Eckington that, I know, the local community would strongly welcome.

Many thanks,

A handwritten signature in black ink that reads "Lee Rowley". The signature is written in a cursive style with a large, looping 'L' and 'y'.

Lee Rowley
Member of Parliament for North East Derbyshire

**MINUTES OF THE EXTRAORDINARY FULL COUNCIL MEETING OF ECKINGTON PARISH
COUNCIL HELD AT THE ECKINGTON CIVIC CENTRE ON MONDAY 31 JULY 2023**

PRESENT Councillor Archer (Chairman)

Councillors: Boyce, Clegg, Dye, Gare, B Kenyon, J Kenyon, Landall, Lloyd, May-Allen, Musson and Pickering

Others – E Smith (Clerk)

30 members of the public

Table of Contents

23/2245 APOLOGIES FOR ABSENCE.....	2
23/2246 VARIATION OF ORDER OF BUSINESS.....	2
23/2247 DECLARATIONS OF MEMBERS INTERESTS.....	2
23/2248 PUBLIC SPEAKING.	2
23/2249 CONFIDENTIAL ITEMS.....	2
23/2250 MINUTES OF THE FULL COUNCIL MEETING	2
23/2251 COMMUNITY ASSET	3

23/2245 APOLOGIES FOR ABSENCE

Cllr Gomez-Reaney, Jackson, Marsh, Renwick and Wheelhouse

23/2246 VARIATION OF ORDER OF BUSINESS

No variations

23/2247 DECLARATIONS OF MEMBERS INTERESTS

No members interests declared

23/2248 PUBLIC SPEAKING.

- A member of the public spoke about the current sale of the Youth Centre at Stead Street, Eckington. This Community asset was sold and it has many possibilities for community use. There are a number of community groups that could utilise the building i.e., dog handling, creche, scouts etc. Eckington is short of usable green space.
- A member of the public asked the Council if a response was received from Derbyshire County Council regarding the sale of the Youth Centre. Clerk stated that this had been received and would be circulated at the next Full Council meeting in September. The green space at Stead Street is used by the Community and was not valued until it was lost.
- A member of the public spoke about the loss of the Youth Club as a Youth Asset.
- A member of the public spoke about the Youth Club and it they would like to turn it into a Community Centre. Could this site be developed instead of the Lansbury playing field? The project at Lansbury has been developed for the last 4 years and nothing has happened to date. The member of the public spoke about establishing a Friends of Eckington Parks group.
- A member of the public echoed other points previously raised. Vandalism issues can be mitigated on the Stead Street site. There are no youth groups in Eckington Parish, there is a School who are currently in special measures and a huge population of young families. This project could potentially be cheaper than building a new Community Hall which could be multi-purpose.
- A member of the public spoke about the Community value of Stead Street. Community spaces are being lost and cut back. The member of the public asked what is the experience on Community Asset bids and why is the agenda item listed as confidential.
- A member of the public spoke about the impact from parking on Stead Street. Where would the football and dance studio park? The new fencing is very oppressive. There is lots of interest regarding poor park facilities. The Lansbury super park has not been given permission from the Miners Welfare to use their land. Children are becoming less active in recent years.
- A member of the public stated Stead Street would of cost far less if they had bid previously on the Youth Centre site. They are ashamed about the comments on Facebook.

23/2249 CONFIDENTIAL ITEMS

No further confidential items

23/2250 MINUTES OF THE FULL COUNCIL MEETING

RESOLVED received and approved as a true record Minutes 23/2206 – 23/2244 of the Full Council Meeting held on 4 July 2023. Chairman duly signed the minutes.

That in view of the confidential nature of the business about to be transacted, a resolution to exclude the Press and Public from the meeting in accordance with the Public Bodies (Admission to Meetings) Act 1960, s1, in order to discuss these items has been resolved.

23/2251 COMMUNITY ASSET

Councillors spoke about the Community Asset.
Clerk requested to note the following in the minutes. Cllr Pickering stated that the County Councillors should have brought this matter to the Parish Council so they could have considered applying for it on the Community Value Register. Cllr Pickering also stated that the Parish Council should be aware of their financial circumstances as a Parish Council it is public money.

RESOLVED Clerk to complete a nomination for Asset of Community Value with NEDDC. Working Party established to consist of Cllr Renwick, Archer, J Kenyon, Wheelhouse and Pickering.

Working Party delegated power to agree the following:

- Cost for a valuation of the site
- Cost if an agent should be used
- Submit an expression of interest to the Community Ownership Fund
- To approve any offers up to the agreed maximum budget set by Council.

The Meeting closed at 8pm

Signed
Chairman Date 5 September 2023



Eckington
Parish Council

STEAD STREET PROJECT

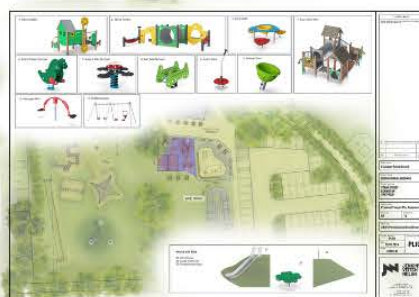
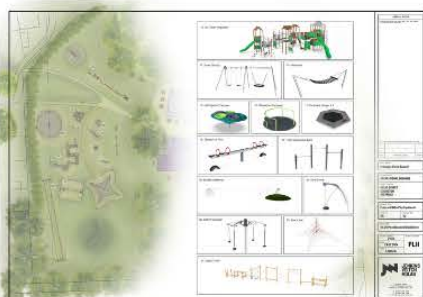
OPEN DAY

- OPEN DAY FOR PUBLIC
- ASK QUESTIONS
- SPEAK WITH COUNCILLORS
- PROJECT DETAILS
- PRESENTATION
- ARCHITECT PRESENT

Eckington Parish Council would like to invite you to an open day regarding the project on Stead Street. There will be an architect and Councillors present to answer your questions and discuss the project with you.

4 APRIL, THURSDAY
18:00 - 20:00
ECKINGTON CIVIC CENTRE

Contact us
E: CLERK@ECKINGTON-PC.GOV.UK



WWW.ECKINGTON-PC.GOV.UK

Usage Survey of Eckington Parish Play Areas - September 2019

Date	Weather	Site	Time	Kids using equipment	Older kids	Adults	Litter Bins overflowing/full/half/quarter	Dog Bins overflowing/full/half/quarter
07/09/2019	Sunny and warm	Emmett Carr Lane Renishaw	11:38	x	x	x	quarter full - adult stuff	na
07/09/2019	Sunny and warm	Golden Ball Renishaw, Play Area	11:30	x - 3 arrived as we left	x	x	A - half B- half	quarter full
07/09/2019	Sunny and warm	Golden Ball Renishaw Skate Park	11:30	x	x	x	C - full	na
07/09/2019	Sunny and warm	Golden Ball Renishaw Field	11:30	x	x	x	na	na
07/09/2019	Sunny and warm	Lansbury Road play area	10:50	2 3yrs	x	1 - nan	quarter full	quarter full
07/09/2019	Sunny and warm	Lansbury Road MUGA and skate park	10:50	x	x	x	na	na
07/09/2019	Sunny and warm	Ash Crescent	11:00	x	x	x	quarter full	quarter full
07/09/2019	Sunny and warm	Warren Crescent	11:10	x	x	x	quarter	na
07/09/2019	Sunny and warm	Darcy Road	11:15	x	x	x	overflowing adult rubbish	na
07/09/2019	Sunny and warm	Wulfric	11:20	x	x	x	na	na
07/09/2019	Sunny and warm	Idas Road	11:25	x	x	x	quarter full - adult litter around	empty
Date	Weather	Site	Time	Kids using equipment	Older kids	Adults	Litter Bins overflowing/full/half/quarter	Dog Bins overflowing/full/half/quarter
08/09/2019	pleasant and warm	Emmett Carr Lane Renishaw	11.15	5 - 8-10yrs not using equipment - just playing with grass	x	x	quarter	na
08/09/2019	pleasant and warm	Golden Ball Renishaw, Play Area	11:20	x	x	x	A - full - litter around the grass area B - half full	half
08/09/2019	pleasant and warm	Golden Ball Renishaw Skate Park	11:20	x	2- 11-13 yrs on skatepark	1	C - half full	na
08/09/2019	pleasant and warm	Golden Ball Renishaw Field	11:20	x	Family on pitch	1	na	na

08/09/2019	pleasant and warm	Lansbury Road play area	11:50	x	x	x	quarter full	third full
08/09/2019	pleasant and warm	Lansbury Road MUGA and skate park	11:50	x	x	x	na	na
08/09/2019	pleasant and warm	Ash Crescent	11:30	2 - 10 -12 yrs - using as an assault course	x	x	half full	quarter full
08/09/2019	pleasant and warm	Warren Crescent	11:40	x	x	x	full	na
08/09/2019	pleasant and warm	Darcy Road	11:45	x	x	x	full /overflowing	na
08/09/2019	pleasant and warm	Wulfric	11:42	x	x	x	na	na
08/09/2019	pleasant and warm	Idas Road	12:25	x	x	x	half full	quarter full

Date	Weather	Site	Time	Kids using equipment	Older kids	Adults	Litter Bins overflowing/full/half/quarter	Dog Bins overflowing/full/half/quarter
09/09/2019	Raining	Emmett Carr Lane Renishaw						
09/09/2019	Raining	Golden Ball Renishaw, Play Area						
09/09/2019	Raining	Golden Ball Renishaw Skate Park						
09/09/2019	Raining	Golden Ball Renishaw Field						
09/09/2019	Raining	Lansbury Road play area						
09/09/2019	Raining	Lansbury Road MUGA and skate park						
09/09/2019	Raining	Ash Crescent						
09/09/2019	Raining	Warren Crescent						
09/09/2019	Raining	Darcy Road						
09/09/2019	Raining	Wulfric						
09/09/2019	Raining	Idas Road						

Date	Weather	Site	Time	Kids using equipment	Older kids	Adults	Litter Bins overflowing/full/half/quarter	Dog Bins overflowing/full/half/quarter
09/09/2019	Bright, some sun	Emmett Carr Lane Renishaw	15:15	x	x	x	quarter full	na
09/09/2019	Bright, some sun	Golden Ball Renishaw, Play Area	15:30	x	x	x	A - empty B - empty	quarter full
09/09/2019	Bright, some sun	Golden Ball Renishaw Skate Park	15:35	x	x	x	C - quarter	na

09/09/2019	Bright, some sun	Golden Ball Renishaw Field	15:35	x	x	x	na	na
09/09/2019	Bright, some sun	Lansbury Road play area	15:55	x	x	x	quarter full	quarter full
09/09/2019	Bright, some sun	Lansbury Road MUGA and skate park	16:00	x	x	x	na	na
09/09/2019	Bright, some sun	Ash Crescent	16:05	x	x	x	half full	half full
09/09/2019	Bright, some sun	Warren Crescent	16:15	x	x	x	quarter full	na
09/09/2019	Bright, some sun	Darcy Road	16:30	x	x	x	overflowing	na
09/09/2019	Bright, some sun	Wulfric	16:25	x	x	x	full	na
09/09/2019	Bright, some sun	Idas Road	16:35	x	x	x	na	quarter full

Date	Weather	Site	Time	Kids using equipment	Older kids	Adults	Litter Bins overflowing/full/half/quarter	Dog Bins overflowing/full/half/quarter
10/09/2019	Sunny and Warm	Emmett Carr Lane Renishaw	16:55	x	x	x	half full	na
10/09/2019	Sunny and Warm	Golden Ball Renishaw, Play Area	16:57	x	x	x	A - empty B - empty C - half full	half full
10/09/2019	Sunny and Warm	Golden Ball Renishaw Skate Park	16:57	x	x	x	na	na
10/09/2019	Sunny and Warm	Golden Ball Renishaw Field	16:57	10 kids on bikes - 13 -15 yrs cycling around area	4 playing football	x	na	na
10/09/2019	Sunny and Warm	Lansbury Road play area	16:15	x	1 hanging around	x	empty	half full
10/09/2019	Sunny and Warm	Lansbury Road MUGA and skate park	16:15	x	x	x	na	na
10/09/2019	Sunny and Warm	Ash Crescent	16:00	3 young children	x	2	3 quarters full	3 quarters full
10/09/2019	Sunny and Warm	Warren Crescent	15:50	x	x	x	half full	na
10/09/2019	Sunny and Warm	Darcy Road	16:10	4 infant/junior aged children	x	2	overflowing	na
10/09/2019	Sunny and Warm	Wulfric	16:05	x	x	x	na	na
10/09/2019	Sunny and Warm	Idas Road	16:55	3 10 - 12 yrs	7 on bikes	1	half full	half full

Date	Weather	Site	Time	Kids using equipment	Older kids	Adults	Litter Bins overflowing/full/half/quarter	Dog Bins overflowing/full/half/quarter
11/09/2019	Sunny and Warm	Emmett Carr Lane Renishaw	15:30	x	x	x	half full	na
11/09/2019	Sunny and Warm	Golden Ball Renishaw, Play Area	15:25	x	x	x	A - empty B - quarter	quarter

11/09/2019	Sunny and Warm	Golden Ball Renishaw Skate Park	15:25	x	x	x	empty	na
11/09/2019	Sunny and Warm	Golden Ball Renishaw Field	15:25	x	x	x	na	na
11/09/2019	Sunny and Warm	Lansbury Road play area	16:10	x	3 teens	x	empty	half
11/09/2019	Sunny and Warm	Lansbury Road MUGA and skate park	16:10	x	x	x	na	na
11/09/2019	Sunny and Warm	Ash Crescent	15:45	1 young child	x	1	empty	three quarters
11/09/2019	Sunny and Warm	Warren Crescent	16:00	x	x	x	empty	na
11/09/2019	Sunny and Warm	Darcy Road	16:15	x	2 teens	x	empty	na
11/09/2019	Sunny and Warm	Wulfric	16:13	x	x	x	na	na
11/09/2019	Sunny and Warm	Idas Road	16:30	3 10 -13 yrs	4 teens	x	empty	half

Date	Weather	Site	Time	Kids using equipment	Older kids	Adults	Litter Bins overflowing/full/half/quarter	Dog Bins overflowing/full/half/quarter
13/09/2019	Sunny and Warm	Emmett Carr Lane Renishaw	16:25	x	x	x	quarter	na
13/09/2019	Sunny and Warm	Golden Ball Renishaw, Play Area	16:35	x	x	x	A - empty B - quarter	half
13/09/2019	Sunny and Warm	Golden Ball Renishaw Skate Park	16:35	5 on bikes using tarmac area	x	x	quarter	na
13/09/2019	Sunny and Warm	Golden Ball Renishaw Field	16:35	x	x	x	na	na
13/09/2019	Sunny and Warm	Lansbury Road play area	16:10	x	x	x	empty	quarter
13/09/2019	Sunny and Warm	Lansbury Road MUGA and skate park	16:10	x	x	x		
13/09/2019	Sunny and Warm	Ash Crescent	15:50	x	x	x	empty	three quarters
13/09/2019	Sunny and Warm	Warren Crescent	15:55	x	x	x	quarter	na
13/09/2019	Sunny and Warm	Darcy Road	16:05	x	x	x	quarter	na
13/09/2019	Sunny and Warm	Wulfric	16:06	x	x	x	na	na
13/09/2019	Sunny and Warm	Idas Road	15:35	8	4	x	empty	three quarters, litter around

Date	Weather	Site	Time	Kids using equipment	Older kids	Adults	Litter Bins overflowing/full/half/quarter	Dog Bins overflowing/full/half/quarter
14/09/2019	Sunny and Warm	Emmett Carr Lane Renishaw	16:10	3	x	x	quarter	na

14/09/2019	Sunny and Warm	Golden Ball Renishaw, Play Area	16:30	3	x	x	A - quarter B - quarter	quarter
14/09/2019	Sunny and Warm	Golden Ball Renishaw Skate Park	16:30	x	4 on bikes	x	quarter	na
14/09/2019	Sunny and Warm	Golden Ball Renishaw Field	16:30	x	x	x	na	na
14/09/2019	Sunny and Warm	Lansbury Road play area	12:30	x	x	x	third	third
14/09/2019	Sunny and Warm	Lansbury Road MUGA and skate park	12:30	x	4 at shelter	x		
14/09/2019	Sunny and Warm	Ash Crescent	12:40	x	x	x	bit	quarter
14/09/2019	Sunny and Warm	Warren Crescent	13:10	x	2 on swings	x	bit	
14/09/2019	Sunny and Warm	Darcy Road	15:15	2 4yo	2 12+	1	quarter	
14/09/2019	Sunny and Warm	Wulfric	16:00	x	x	x	quarter	unknown
14/09/2019	Sunny and Warm	Idas Road	15:50	x	x	x	bit	third, and litter on ground

Date	Weather	Site	Time	Kids using equipment	Older kids	Adults	Litter Bins overflowing/full/half/quarter	Dog Bins overflowing/full/half/quarter
16/09/2019	Sunny and Warm	Emmett Carr Lane Renishaw	15:55	x	x	x	quarter	na
16/09/2019	Sunny and Warm	Golden Ball Renishaw, Play Area	15:45	2 1x8yo and 1x10yo	x	1	A - quarter B - quarter	empty
16/09/2019	Sunny and Warm	Golden Ball Renishaw Skate Park	15:45	x	x	x	half	na
16/09/2019	Sunny and Warm	Golden Ball Renishaw Field	15:45	x	1	x	na	na
16/09/2019	Sunny and Warm	Lansbury Road play area	15:40	x	x	x	full	half
16/09/2019	Sunny and Warm	Lansbury Road MUGA and skate park	15:40	x	x	x	na	na
16/09/2019	Sunny and Warm	Ash Crescent	16:15	x	x	x	quarter	three quarter
16/09/2019	Sunny and Warm	Warren Crescent	16:20	x	x	x	quarter	
16/09/2019	Sunny and Warm	Darcy Road	16:10	3 3yo, 4yo and 7yo	x	1	quarter	na
16/09/2019	Sunny and Warm	Wulfric	16:05	2 both 10yo	x	x	quarter	na
16/09/2019	Sunny and Warm	Idas Road	15:30	x	x	x	quarter	half and lots of litter scattered around

Date	Weather	Site	Time	Kids using equipment	Older kids	Adults	Litter Bins overflowing/full/half/quarter	Dog Bins overflowing/full/half/quarter
18/09/2019	Warm	Emmett Carr Lane Renishaw	16:25	x	x	x	quarter	na
18/09/2019	Warm	Golden Ball Renishaw, Play Area	16:20	x	x	x	A - quarter B - half	quarter
18/09/2019	Warm	Golden Ball Renishaw Skate Park	16:20	2 on bikes	x	x	empty	na
18/09/2019	Warm	Golden Ball Renishaw Field	16:20	3 on bikes	x	x	na	na
18/09/2019	Warm	Lansbury Road play area	16:35	x	x	x	3/4	3/4
18/09/2019	Warm	Lansbury Road MUGA and skate park	16:35	x	x	x		
18/09/2019	Warm	Ash Crescent	15:45	2 1x7yo and 1x10yo	x	1	quarter	3/4
18/09/2019	Warm	Warren Crescent	15:35	x	x	x	quarter	na
18/09/2019	Warm	Darcy Road	15:53	x	x	x	half	na
18/09/2019	Warm	Wulfric	15:50	x	x	x	half	na
18/09/2019	Warm	Idas Road	16:10	x	x	x	empty	half full and litter everywhere

Date	Weather	Site	Time	Kids using equipment	Older kids	Adults	Litter Bins overflowing/full/half/quarter	Dog Bins overflowing/full/half/quarter
28/09/2019	Warm and Sunny	Emmett Carr Lane Renishaw	14:05	x	x	x		
28/09/2019	Warm and Sunny	Golden Ball Renishaw, Play Area	14:00	x	7 15-16yo vaping and playing rap music, not using equipment	x	A - half B - half	quarter
28/09/2019	Warm and Sunny	Golden Ball Renishaw Skate Park	14:00	3 on bikes on tarmac	x	x	bit	na
28/09/2019	Warm and Sunny	Golden Ball Renishaw Field	14:00	x	4	x	na	na
28/09/2019	Warm and Sunny	Lansbury Road play area		2	x	x	?	?
28/09/2019	Warm and Sunny	Lansbury Road MUGA and skate park Ash Crescent Warren Crescent		x	5 at shelter	x	?	?
28/09/2019	started raining	Darcy Road					full	third

Wulfric
Idas Road

General comments collected while conducting surveys

Why no ball games? Its a park.

Trees for hiding and bushes - popular - e.g. Warren Crescent, and bigger version at Millhouses

Small maze of some sort, with gap underneath to not actually lost

Rubber tiles surfaces lasting far longer than continuous wet pour

Darcy bin needs emptying twice a week, or have two bins.

Idas Road - need to swap the dog bin and the litter bin, as litter bin needs to be in park and dog bin is for walkers using the path.

Dog poo bags thrown over garden hedges from Warren Crescent - need one like on Wulfric, with a chute, so cannot do that

Kids like using bikes and scooters lots - mounds and tracks and dips would be great for that

Metal skate park not safe for how used (bikes, scooters etc)

Big slide very popular at Cliffe Park - made safe by having it run up and down a hill

Adult options, e.g. bigger swings, balance circuits etc

Kids (11yo) say climbing frame at Golden Ball too small

Hasland got lottery money for a play area

Evidence from Cliffe Park shows that a good park brings people in from all over the area

Evidence from our play areas and Cliffe Park shows that catering for split ages is important - e.g. a 3yo and a 9yo want very different things

Where there are lots of younger kids, the kids play together, and the older kids stay away

Cliffe Park, Dronfield - Survey from afternoon, Saturday 14 Sep 2019

Weather: sunny and warm

There were about 100 kids and 100 adults. Kids ranged from 1 to 15, with majority 3-12

Where From	Why came to Cliffe Park
Hunters Bar	
Gleadless	
Beighton	
Dronfield Woodhouse	
Dronfield Woodhouse	
Sheffield	
Chesterfield	Parking, food, stuff to do for all ages
Chesterfield	
Chesterfield	
Woodseats	
Green Hill	
Chesterfield	Big slide
Dronfield Woodhouse	
Sheffield	This is a better park - better than Graves Park (others also mentioned this)
Chesterfield	Catering for mixed age of kids important
Low Edges	
Dronfield	
Dronfield	
Renishaw	Better park than Golden Ball
Beighton	Their local park vandalised, glass, limited choice
Totley	Sand pit really good
Woodseats	Enclosed sand pit good
Dronfield	
Dronfield	
Chesterfield	
Marsh Lane	Catering for variety of ages
Sheffield (Crosspool)	Sand pit, cake, can make a day of it
Dronfield	Sand pit
Dronfield	Sand pit
Millhouses	Sand pit
Tapton	Can use park even in the rain. Good quality things to do.
Unstone	Much better than park in Unstone
Eckington	Variety. Kids like to play where there are lots of other kids.
Coal Aston	Variety, tea and coffee
Intake	Variety
Coal Aston	
Dronfield	Also uses small enclosed parks (has toddler under 3 is why)
Dronfield	Its a great park
Dronfield	
Rotherham	Its a nice park
Dronfield	
Waterthorpe	nice park, cake
Barnsley	good park, facilities
Newbold	Cafe, toilets
Chesterfield	Zip wire, big slide, sand pit
Dronfield	Variety - includes field for football, tennis courts

Questionnaire - 4 April 2024 during the Open Day event at the Civic Centre

Attendees 48
 Surveys Completed 28

1. What street within the Parish do you live on?

School St	Stead Street	Stead Mews	Green Chase	Ravencar Road	Fenton Street	High Street	Kestrel Drive	Greenfields	Southgate	Staniforth Ave
	4	12	3	1	1	1	1	1	2	1

2. Do you visit Eckington Parish play areas?

YES 19
 NO 9

Comments received if answered 'No'

No Children Safety element
 8 1

3. Do you regularly visit large parks in other Towns? i.e Cliffe Park or Millhouses

YES 21
 NO 7

If answered 'yes' what are the main attractions/facilities?

No further comments	Larger play areas with a variety of equipment	Café/Toilets	Secure/Safe	Water area	Space for Clubs to use	Grassed areas for games	Sandpit	Good surfacing	Trees/Wildlife	Walking/Running/ Training
5	13	10	4		1	2	2	2	1	1

Bike Pump	Parking	Sports		
		Dog Walking	Pitches	
1	1	1	1	1

4. Do you support a play park with café and toilet facilities at the old Stead Street Youth Centre, Eckington?

YES 26
 NO 0

Not answered 2

5. Any other comments	CCTV required	Avoid a one way traffic system	Should have one way road system	Keep existing hedges	Reduce height of hedges	Like the variety of play equipment	Open Spaces with nature need to be kept
	6	1	7	1	1	1	2

Bird Boxes/bat boxes/ Owl boxes	Wildflowers	Place for the whole community	Concerned about sandpit - cleanliness	Needed improvement for that space/area	Concerned about ASB/Vandalism	Fencing required	Lighting required	Traffic/Speeding concerns	Car park should be locked up at night	Use more metal equipment rather than wood
2	2	2	2	1	14	1	4	7	2	1

Natural wooden equipment used	Good for mental health	Concerned about construction works i.e large machinery	Area should be left as a green space	Play equipment too close to housing	Sports activities/ i.e boot camp	Don't use wetpour due to shrinkage	Entrance needs to look welcoming	Encourage people to use carpark rather than idling on the roads	Double yellow lines introduced/Parking permits	Café space used by other groups
1	1	1	1	1	1	1	1	1	2	4

Trees to be kept and maintained	Accessibility DDA compliance/changing places	Proper footpaths	Place for local artist works	Involve local groups/volunteers to take ownership of the site	Interpretation facilities/information	Get local schools involved i.e stone carving, sensory trails, totum pole, trail, rubbings
1	1	1	1	1	1	1